

Customer :

customer

Customer part :

customer part

Comment :

Comment

S1=7.51

S2=7.99

Tmax=449

Tp S2=488.0

PI=0.48

HI=124

Sample =1778.30

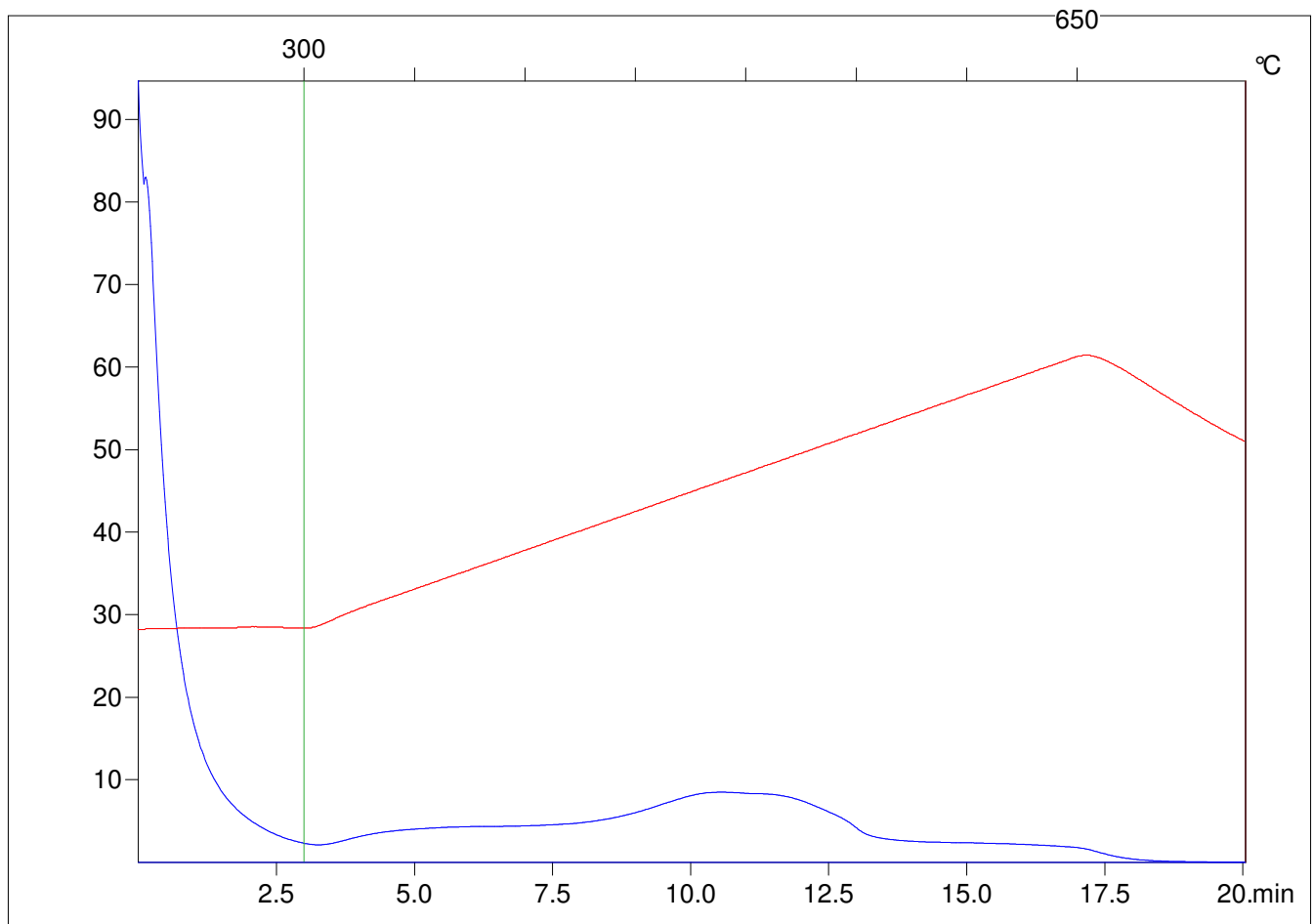
Method =Bulk Rock

Cycle=Basic

KFID(10*9)=1444

Qty =70.5

TOC=6.45



C:\VINC\PK3_1792\PK062.R00 : FID pyrolysis graphic

State Ok

Pyro Status Negative value

Oxi Status Negative value